

## Education Programs

Learning is always fun at the Pineywoods Native Plant Center! Guided tours for adults, families, and school groups may be scheduled at least 2 weeks in advance by contacting the Education Office at 936-468-1832 or [erodewald@sfasu.edu](mailto:erodewald@sfasu.edu).

**Walk and Talk Tours** are a favorite with garden clubs and other garden enthusiasts. Tour the Pineywoods Native Plant Center and Horticulture Facilities to learn more about the 3 R's program and natives for an East Texas landscape.

**Go Wild!** School groups discover rare and endangered plants, investigate adaptations, and explore native East Texas ecosystems while taking a guided hike. Students collect and analyze water samples, create rope from plant material, and learn about the benefits and uses of native plants.

**Wild About Wetlands** is an in-depth investigation where students learn about hydric soils, characteristic wetland plants, the importance of watersheds, and the water cycle. Students also collect and analyze macro-invertebrates to determine the health of a wetland at the PNPC.

**Tucker Memorial Easter Egg Hunt** is a family favorite in Nacogdoches. Held the Saturday before Easter, this event commemorates the annual egg hunt hosted by Mimi Tucker, former owner of the property. The Easter Bunny hides plenty of eggs, and you can count on a visit from Smokey Bear and Hooty Owl!



Pineywoods Native Plant Center  
2900 Raguet Street  
P.O. Box 13000-SFA Station  
Nacogdoches, TX 75962-3000

Director: 936-468-4343  
Horticultural Facility: 936-468-4104  
Education Office: 936-468-1832  
Fax: 936-468-4047

<http://pnpc.sfasu.edu>

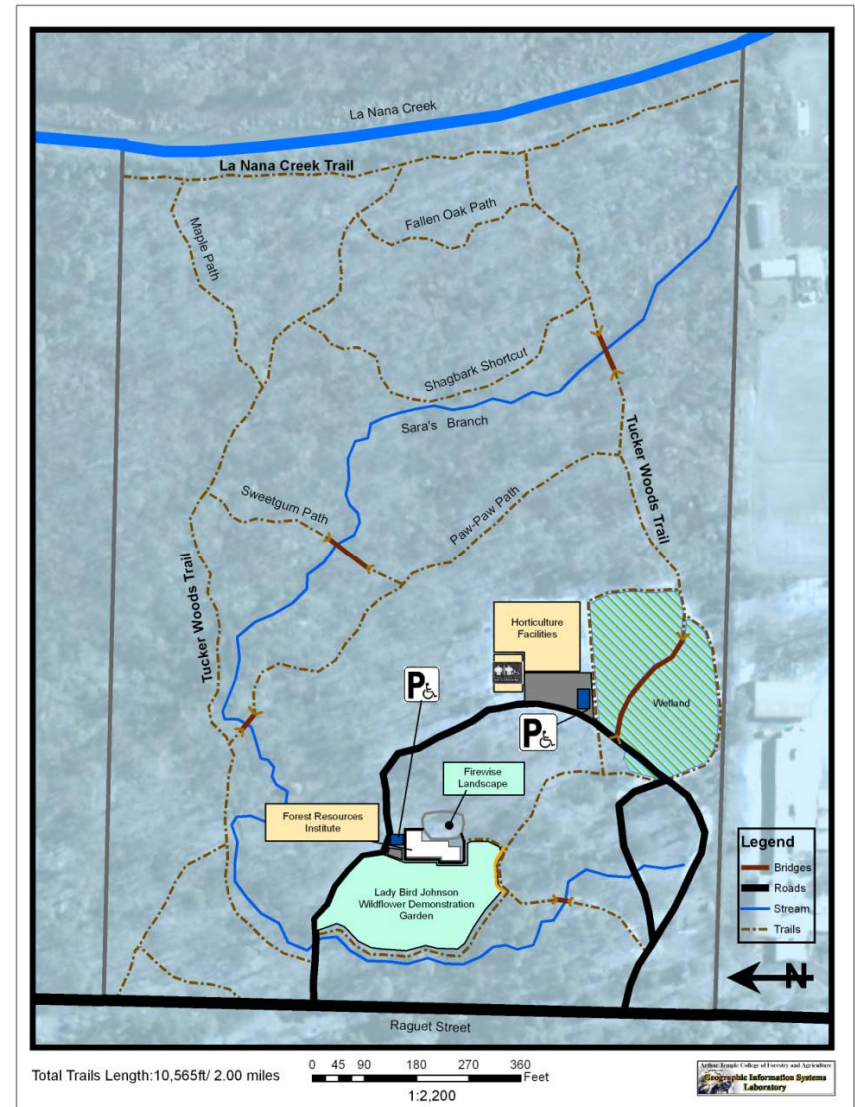
Stephen F. Austin State University  
Arthur Temple College of Forestry and Agriculture  
Department of Agriculture



*Promoting Education  
About Conservation and  
Use of Native Plants of the  
Southern Forest*



## SFA Pineywoods Native Plant Center



# Lady Bird Johnson Wildflower Demonstration Garden

The demonstration garden was dedicated by Lady Bird Johnson on April 8, 2000 and features over 100 species native to the East Texas Piney woods. Visit five different plant communities represented in the garden.

**Dry upland communities are characterized by clayey or deep sandy soils and drought-tolerant plants. Many colorful, sun-loving wildflowers and grasses grow in dry upland communities.**



Prickly Pear *Opuntia* sp.



Pussytoes *Antennaria parlinii*



False Aloe  
*Manfreda virginica*



Rattlesnake Master  
*Eryngium yuccifolium*



Louisiana Yucca  
*Yucca louisianensis*



Pale Coneflower  
*Echinacea pallida*

**Mesic slopes and stream bottom communities have well-drained, acidic soils. A thick layer of leaf litter contributes to this moist and fertile plant community. Streams are well-defined and have a narrow flood plain.**



American Beautyberry  
*Callicarpa americana*



Carolina Lily  
*Lilium michauxii*



Red Buckeye  
*Aesculus pavia*



Indian Pink  
*Spigelia marilandica*

**Wet stream bottom communities and forested seeps are formed by groundwater seepage areas, drainages, and shallow creek channels where water stands year round.**



Jack-in-the-Pulpit  
*Arisaema triphyllum*



American Holly  
*Ilex opaca*



Sensitive Fern  
*Onoclea sensibilis*



Spiderwort  
*Tradescantia ohioensis*



Inland Sea Oats  
*Chasmanthium latifolium*



Oak-leaf Hydrangea  
*Hydrangea quercifolia*

**Natural wetlands such as marshes, river floodplains, and swamps absorb excess water, slow flooding, strain silt and debris from the water, neutralize toxic substances, protect shorelines from erosion, and provide important habitat for wildlife. The wetland at the PNPC serves many of the same functions as it filters the runoff from the horticulture nursery pad and greenhouse.**



Common Cattail  
*Typha latifolia*

Bald Cypress  
*Taxodium distichum*



Spike-rush  
*Eleocharis* sp.

Palmetto  
*Sabal minor*



Pickereel Weed  
*Pontedaria cordata*



Louisiana Iris  
*Iris fulva* cv.

Photos by David Creech, Greg Grant, Elyce Rodewald, Dawn Stover, James Van Kley. PNPC map created by Glen Overturf.

## The Three R's Research Program

There are 30,000 species of plants in North America, 5,700 in Texas, and 2,300 call the Piney woods Home. While only 4 are listed as federally endangered, there are at least 50 in East Texas that deserve immediate conservation attention due to the small numbers of plants or plant colonies that exist.

One goal of the SFA Pineywoods Native Plant Center is to study rare native plants with the intent to increase species survival in a 3-step process:

- **Rescue**-Collecting, with permission, endangered plant material from protected sources.
- **Research**-Conducting propagation & container production research to see how best to build numbers for reintroduction. This crucial conservation horticulture work is conducted at the Horticulture Facility at the PNPC.
- **Reintroduction**-Replanting in appropriate sites, usually working with state & federal agencies to support their conservation programs.

Current research includes the following endangered species:

### Texas Trailing Phlox



*Phlox nivalis texensis*  
Located in the Lady Bird Johnson Demonstration Garden at the PNPC. Reintroduced to protected sites in the The Big Thicket Preserve near Beaumont, Texas.

### Winkler's White Firewheel

*Gaillardia aestivalis* var. *winkleri*



Prefers sandy, sunny sites. Located in our 118-acre conservation easement at Mill Creek Gardens west of Nacogdoches.



### Neches River Rose Mallow

*Hibiscus dasycalyx*

Prefers moist, lowland soils. Also located in Mill Creek Gardens research area.